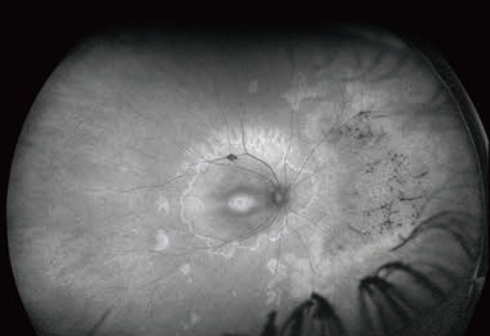
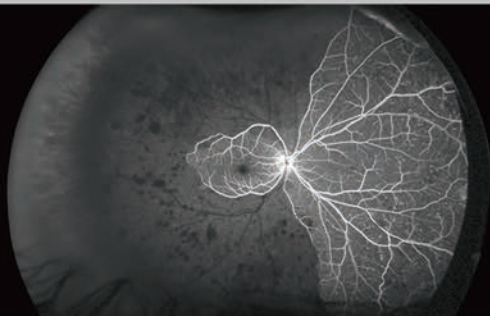




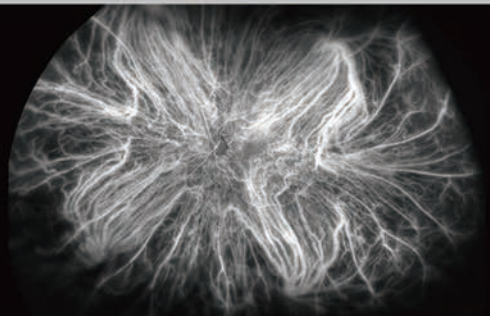
optomap® *color*



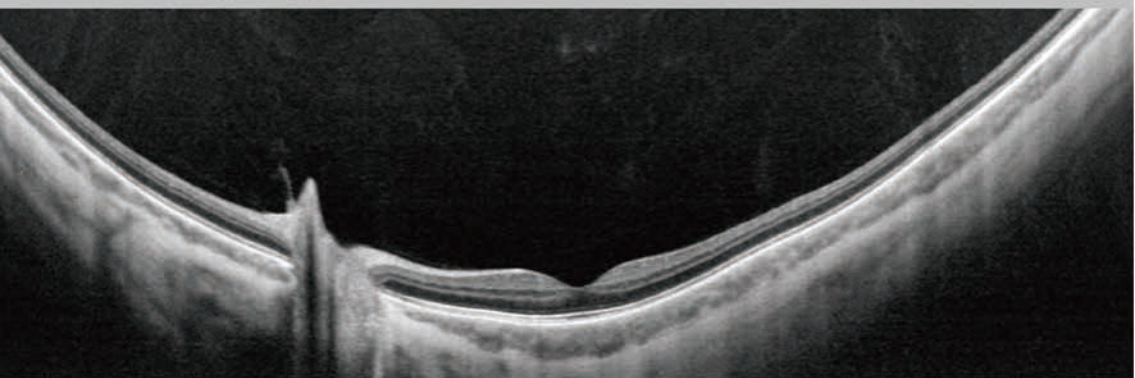
optomap® *af*



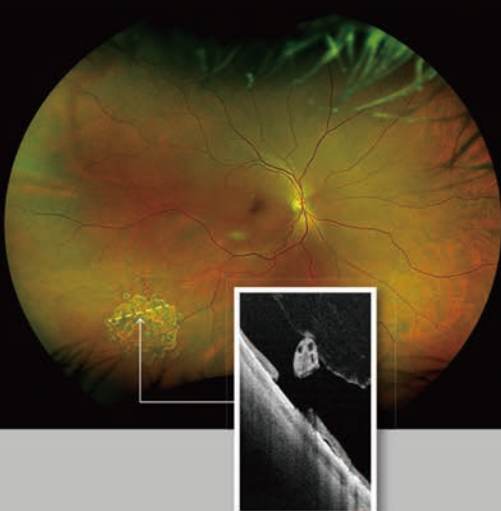
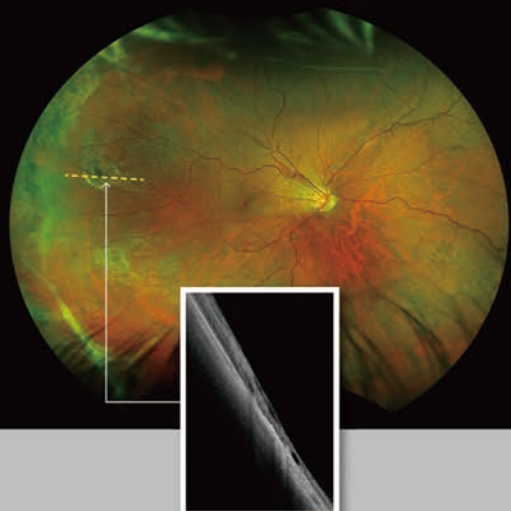
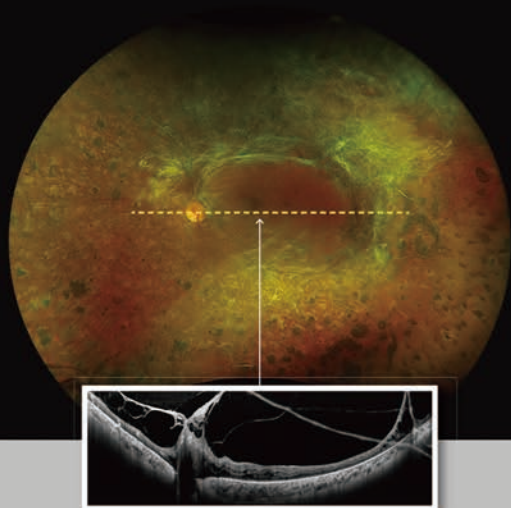
optomap® *fa*



optomap® *icg*



Silverstone is the only ultra-widefield imaging device with integrated swept-source OCT. It can produce a 200° single-capture retinal image of unrivaled clarity in less than 0.5 second and enables optomap-guided OCT scanning across the retina and into the far periphery.



Silverstone is the only ultra-widefield imaging device with integrated swept-source OCT. It can produce a 200° single-capture retinal image of unrivaled clarity in less than 0.5 second and enables optomap-guided OCT scanning across the retina and into the far periphery.

